

The new generation oil
 ↗ specially for PSA engines.

TOTAL QUARTZ INEO ECS



The new Euro IV environmental standards, tomorrow Euro V, have led manufacturers to generalise the installation of "post-treatment" systems in order to reduce engine polluting emissions. These new systems require the development of new lubricants with a lower ash, phosphorous and sulphur content.

This is why TOTAL has developed a new generation of lubricants, specially designed for Peugeot and Citroën, which contributes to improved compliance with the new environmental standards and the expectations of your customers in terms of fuel savings, cleanliness and engine protection.

QUARTZ INEO ECS is an exceptional lubricant, to Fuel Economy standard and environmentally friendly, designed in close cooperation with the PSA research teams. This is the preferred first-fill for PSA's HDi DPF.



TOTAL's "ECS - Emission Control System" technology was developed specially for PSA, in order to create a new generation of the so-called Low SAPS lubricants (low sulphated ash, phosphorous and sulphur contents). Jointly with DSI company, TOTAL has developed a system for the continuous measurement of clogging of post-treatment systems based on radio-tracer marking. QUARTZ INEO ECS oil was made-to-measure for PSA to harsh condition levels far above those of the ACEA (ACEA C2: oil combining Low SAPS and fuel savings). ECS is an authentic innovation "label" at the service of the PEUGEOT and CITROËN networks.

TOTAL QUARTZ INEO ECS is the only Low SAPS oil officially recommended by Peugeot and Citroën for their networks.



Suspended mobile



Top-up can stand



Rear view mirror mini-tie



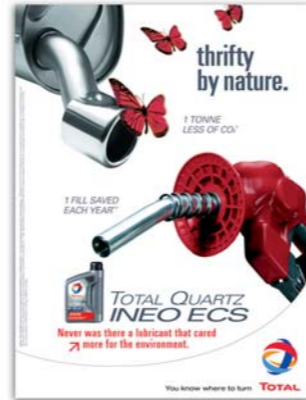
Counter for top-up cans

TOTAL QUARTZ INEO ECS

A very strong impact
 ↗ communication campaign.

TOTAL provides you with a complete communication kit, with a very high impact on your customers, to enable you enhance your offer and strengthen your specialist image in terms of Manufacturer Service provider.

Poster 60x80 cm



Counter-top stand for fliers



3-leaf fliers



Sump sticker

CAEFENE - TOTAL LUBRIFIANTS, Le Dôme B, 18 rue de la République 92022 PARIS LA DEFENSE France - 021 000 654 ECS_Nature - 1100 - Photos and document not contractually binding - www.lubricants.total.com



made-to-measure
 for PSA.



TOTAL QUARTZ INEO ECS

Never has a lubricant provided you
 ↗ with so many solutions.



You know where to turn TOTAL



You know where to turn TOTAL

TOTAL QUARTZ INEO ECS

A solution ↗ for an enormous sales potential.

An enormous potential: QUARTZ INEO ECS is suitable for all Diesel engines, both older and new generation.

FUEL ECONOMY TECHNOLOGY APPLICABLE TO ALL DIESELS.

With QUARTZ INEO ECS, all PSA Diesel engines have access to Fuel Eco technology, in which TOTAL is the leader: reduction in fuel consumption thanks to engine lubrication. The Fuel Eco standard is specific and officialised by the ACEA.

An increasing number of vehicles concerned: in Europe, more than one new car in two is a Diesel, 70% in France!



Almost 1 million Peugeot and Citroën vehicles are already equipped with a DPF and soon one new Diesel in two.

There is sustained optimised efficiency of the DPF: servicing of the latest DPF generation is now extended to 200 000 km!

AN ESSENTIAL LUBRICANT FOR THE DPF.

The oil metal compounds clog the Diesel Particulate Filter (DPF) and downgrade its efficiency. Formulated with a new generation of additives, QUARTZ INEO ECS is a Low SAPS oil (low sulphated ash, phosphorous and sulphur) which reduces these metal compounds by 50% in relation to a conventional oil.

QUARTZ INEO ECS bolsters the effect of the DPF and thus enables sustained compliance with EURO IV emission control standards.

A LUBRICANT SUITABLE FOR ALL POST-TREATMENT SYSTEMS.

QUARTZ INEO ECS favours excellent exhaust gas recirculation which is essential to monitoring nitrous oxide (NOx) emissions and makes for less clogging of the EGR valve, thus preventing loss of power!

The EGR valve clogs less!

TOTAL QUARTZ INEO ECS

A solution ↗ which makes you stand out.

AN ECONOMICAL DIFFERENCE.

1 fill saved each year!

Certified fuel savings, the result of numerous tests: consumption is reduced as engine internal friction is reduced with QUARTZ INEO ECS.

A clear advantage for your customers who will see the difference.

AN ECOLOGICAL DIFFERENCE.

1 tonne less of CO₂**

The new EURO IV emission control standards impose a 50% reduction in polluting gas emissions. QUARTZ INEO ECS, by reducing fuel consumption, reduces CO₂ emissions. Formulated for PSA "post-treatment" systems, it enables them to eliminate the major part of toxic emissions.

Environmental protection is a subject to which your customers are increasingly sensitive.

A DIFFERENCE IN QUALITY.

An oil designed to keep pace with PSA service routines, even the harshest.

A real technological challenge: 50% reduction in the metal compounds in its formula in relation to a conventional oil, while improving its performance and engine life!

An essential commitment to quality for your customers.

Increasingly efficient protection against wear and oxidation resistance.

A solution ↗ for increased profitability.

SIMPLIFIED STOCK CONTROL.

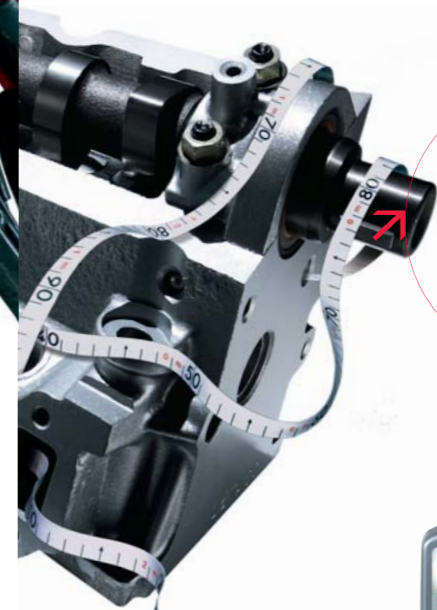
The technical complexity of recommending a lubricant for Diesel engines is no longer an issue!

QUARTZ INEO ECS is suitable for all Diesel engines, both older and new generation. It totally simplifies the technical product recommendation.

The ideal solution to rationalise the number of oil essential part numbers.

MOVING UP THE RANGE IS FACILITATED.

The strength of its economical and ecological arguments makes it an excellent opportunity to move up the range, while emphasizing the image of the Manufacturer's Service approval. A top of the range product for more profitability.



* 30L. Result obtained using QUARTZ INEO ECS instead of traditional 15W-40 oil, for a passenger car PEUGEOT 307 or CITROËN C4 (1,6 Hdi) with a consumption of 4,8L/100 km, covering 18000 km annually.
** Reduction of 4 g of CO₂ emissions per km, corresponding to a reduction of 1 tonne of CO₂ emissions over the vehicle's lifetime for a diesel passenger car whose average lifetime is estimated to be 250.000 km.